

Firmware upgrade manual

Table of Content

| | |
|--|----|
| Firmware upgrade manual | 1 |
| 1 Prerequisite | 2 |
| 2 Overview of Firmware Upgrade | 2 |
| 3 Extract and run firmware upgrade tool..... | 3 |
| 4 Upgrade firmware on speaker | 5 |
| 5 Upgrade firmware on dongle | 8 |
| 6 Do Pairing for speaker set | 11 |
| 7 Troubleshooting on speaker firmware upgrade..... | 13 |

1 Prerequisite & Precaution

Never remove power from your speaker (except battery speaker) during firmware upgrade. Make sure the power supply is stability connected.

Please carefully check firmware is specific for your speaker and dongle :

| | |
|---------------------------------|--------------------------------|
| ONEClassicSpeaker(yyyymmdd).fwu | for ONEClassic |
| ONETowerSpeaker(yyyymmdd).fwu | for ONETower |
| ONEBatterySpeaker(yyyymmdd).fwu | for ONEmicro, ONEmini, ONEmedi |
| ONEDongle(yyyymmdd).fwu | for ONEDongle |

Load a wrong firmware may cause your device permanently locked up, or in case of unexpected interruption during firmware upgrade, you can force your speaker to primary firmware and do firmware upgrade again. Please carefully read section 7 on page 13. Primary firmware is for emergency recovering, it is not recommend for normal operation.

If your WIN PC can't run firmware upgrade tools, 2 drivers might be missed. Please install below drivers from Microsoft official web site :

(1) Microsoft .NET Framework 4.5

<https://www.microsoft.com/en-US/download/details.aspx?id=30653>

(2) Microsoft Visual C++ 2010 SP1 Redistributable Package SP1

<https://www.microsoft.com/en-us/download/details.aspx?id=13523>

2 Overview of Firmware Upgrade

Step overview:

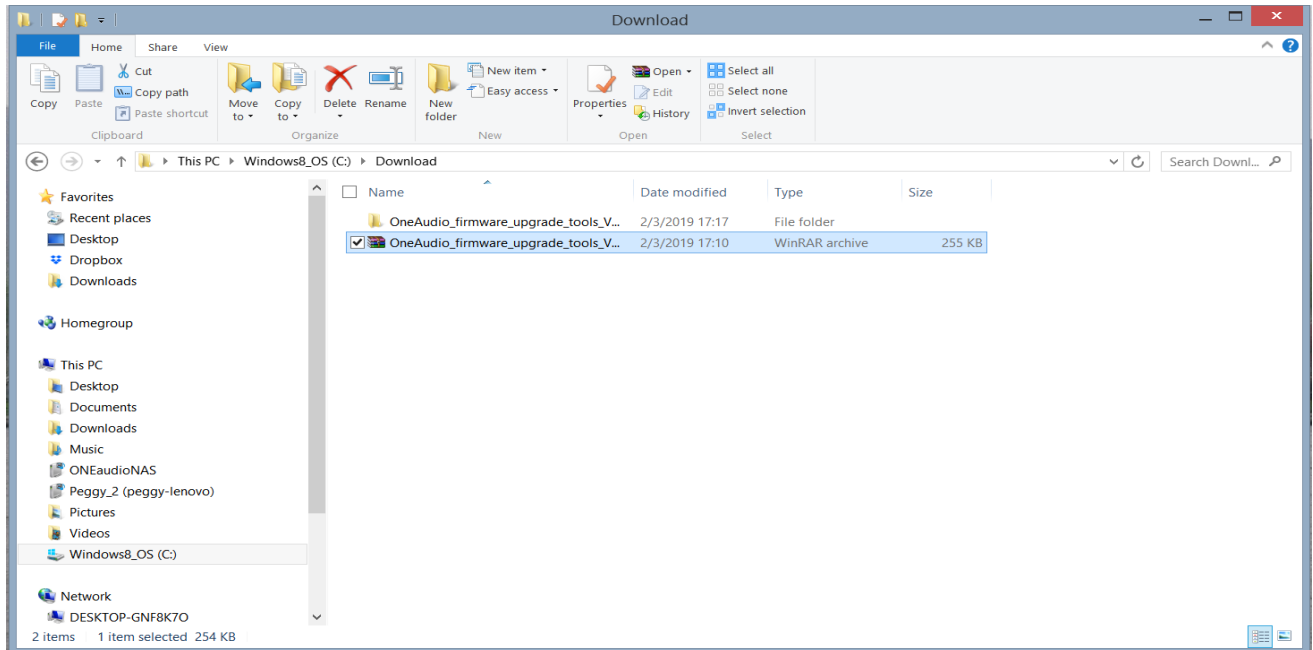
1. Extract and run firmware upgrade tools on your PC
2. Upgrade firmware of your speakers
3. Upgrade firmware of dongle
4. Do pairing for the speaker set

Tools required:

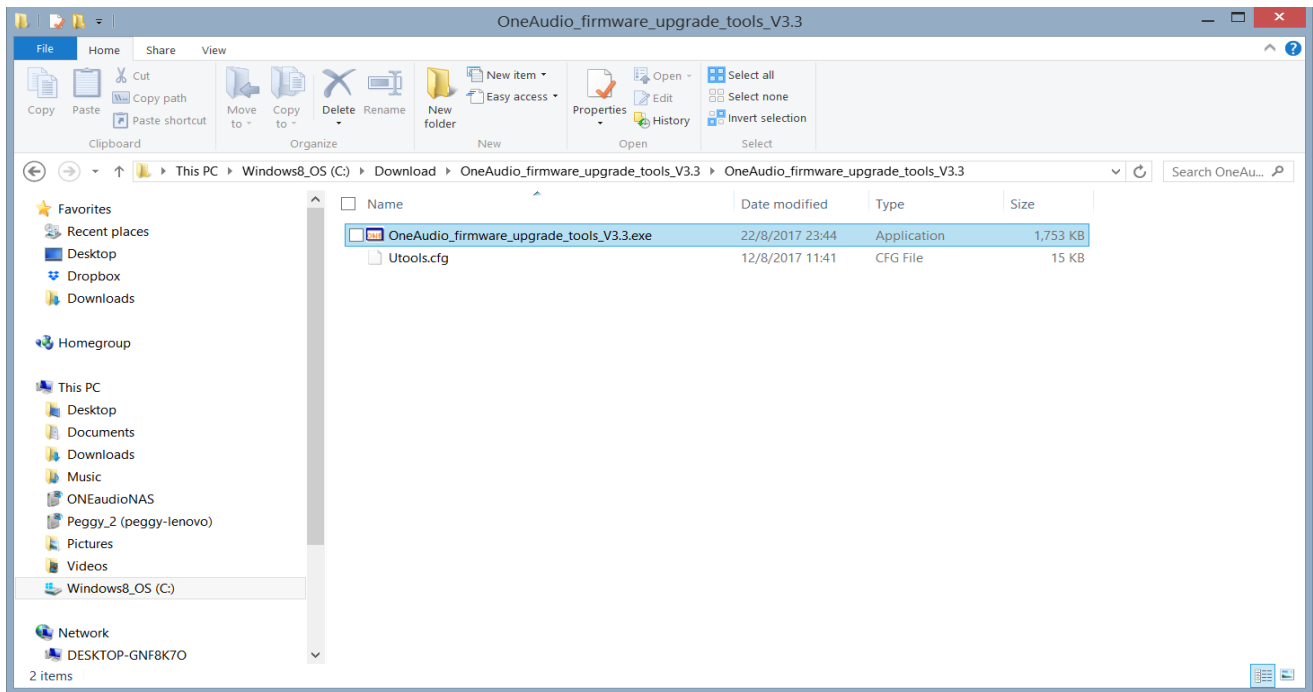
1. PC with Windows (WIN7, WIN8 or WIN10)
2. Micro USB data cable (4-wires)
3. USB power adaptor or USB power bank for ONEDongle pairing

3 Extract and run firmware upgrade tool

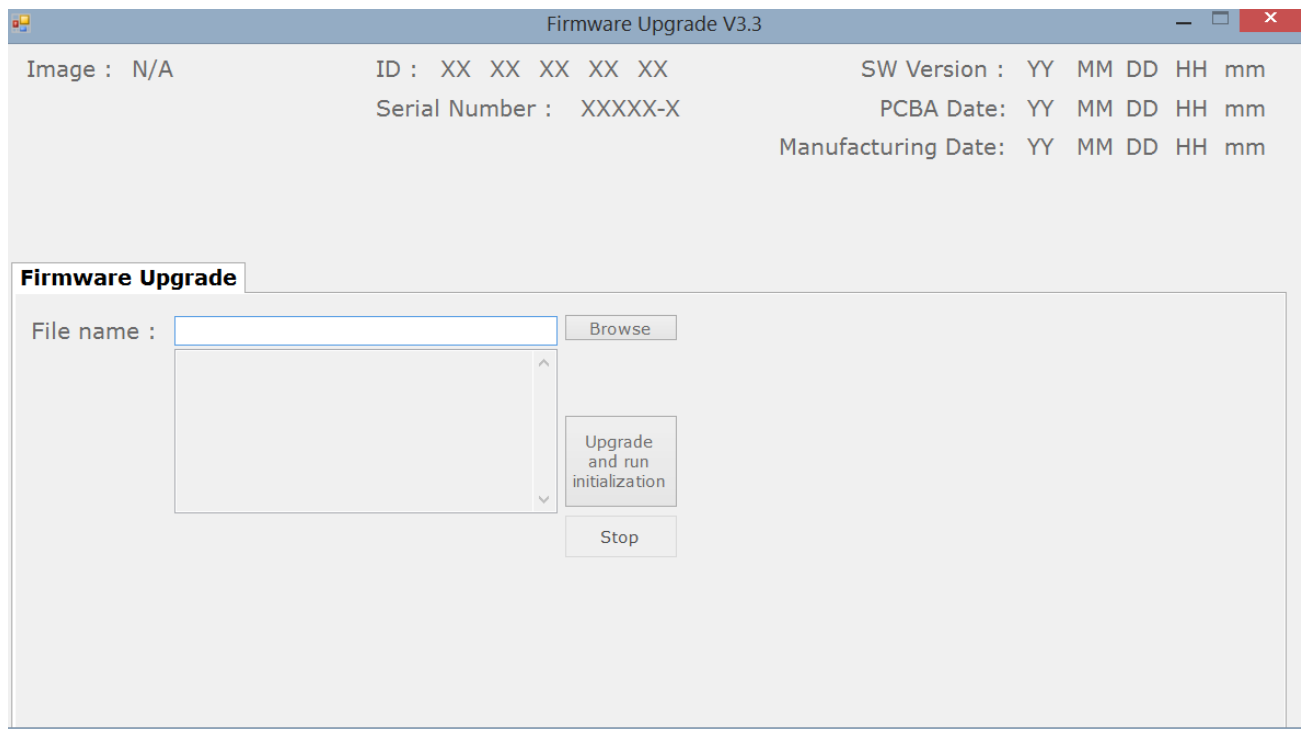
1. Extract zip file the ONEaudio_firmware_upgrade_tools_V4.exe.zip into folder



2. Double click on the ONEaudio_firmware_upgrade_tools_V4.exe executive file.



3. Firmware upgrade tool will be shown as below screen.



4. If your WIN PC cannot run firmware upgrade tool, please install below drivers from Microsoft official website :

Microsoft .NET Framework 4.5

<https://www.microsoft.com/en-US/download/details.aspx?id=30653>

Microsoft Visual C++ 2010 SP1 Redistributable Package SP1

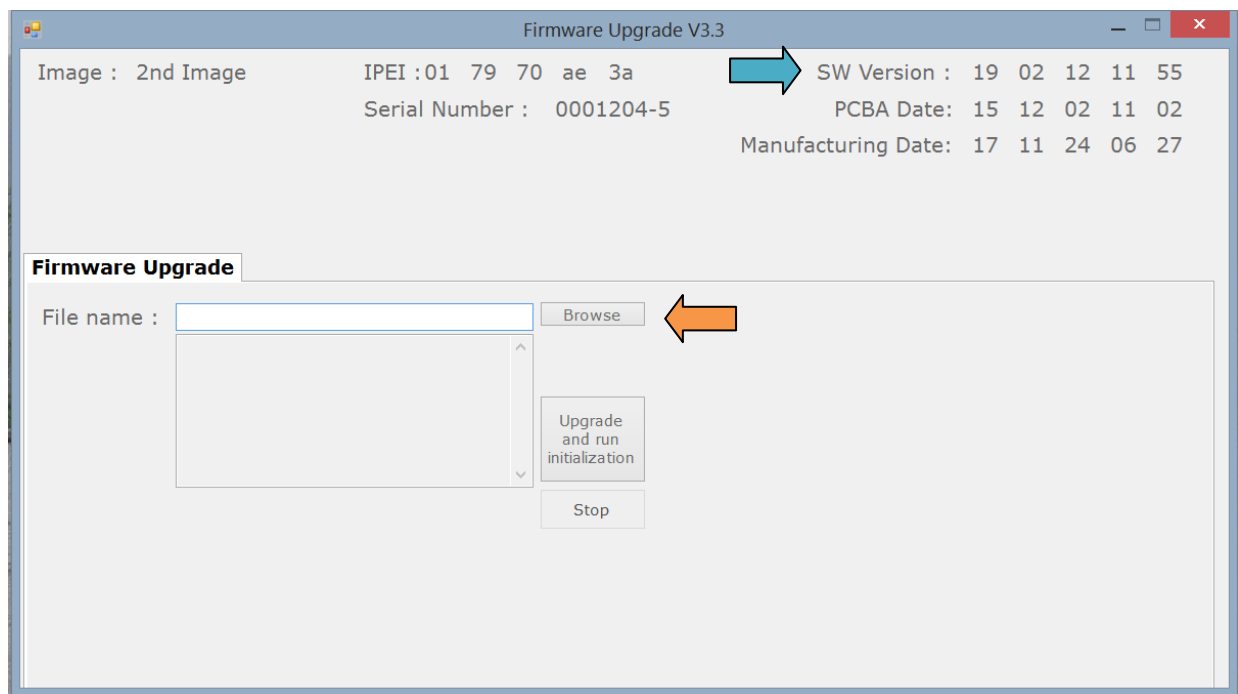
<https://www.microsoft.com/en-us/download/details.aspx?id=13523>

4 Upgrade firmware on speaker

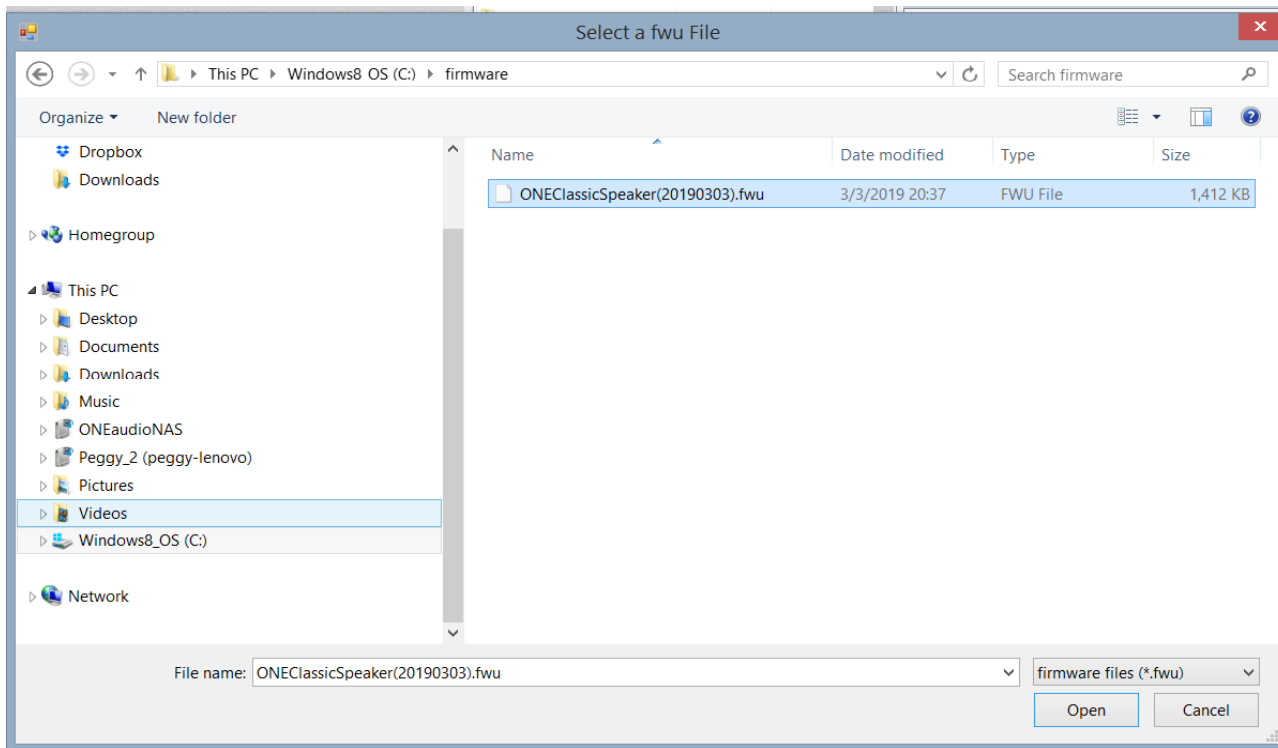
1. Please put your speaker in idle, make sure it is not connecting with transmitter ONEdongle or ONEbox. Power off ONEbox.micro and remove dongle from USB port. Connect your speaker to PC with a micro USB data cable. Please wait a moment for your PC to install USB driver on the first time usage.



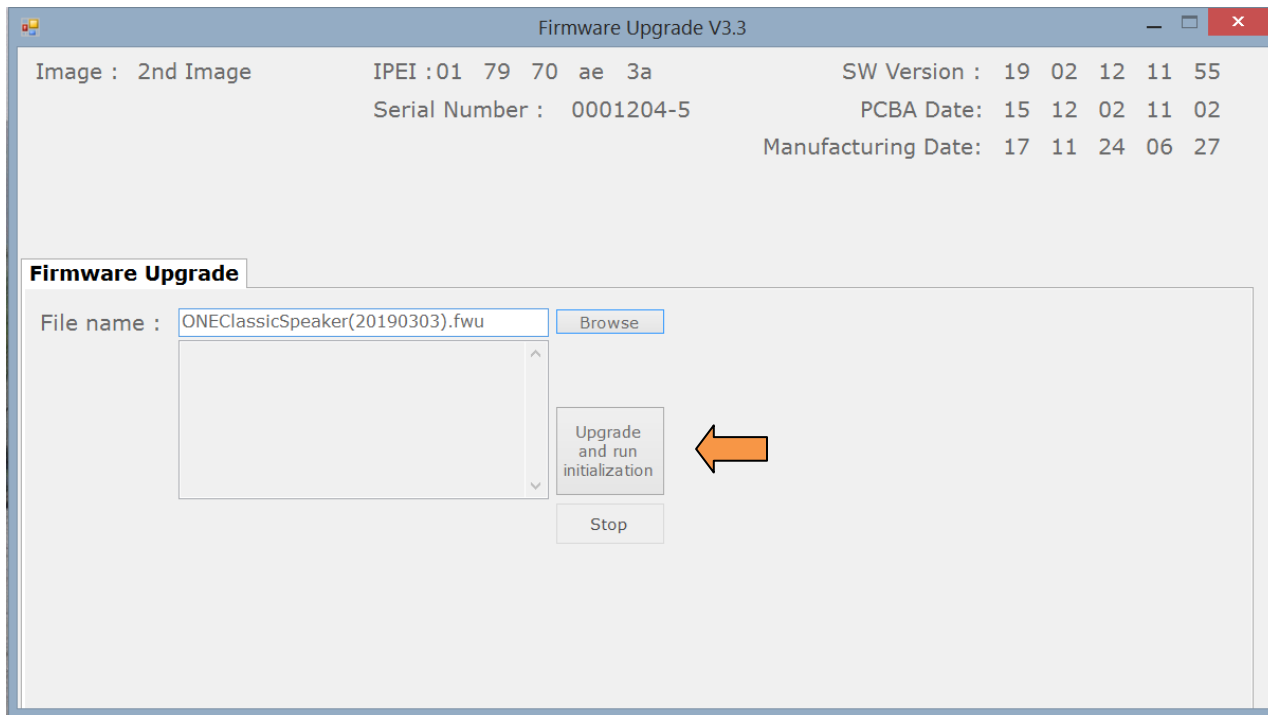
2. The screen will show **software version** information when the device is connected. Click [Browse] to select firmware.



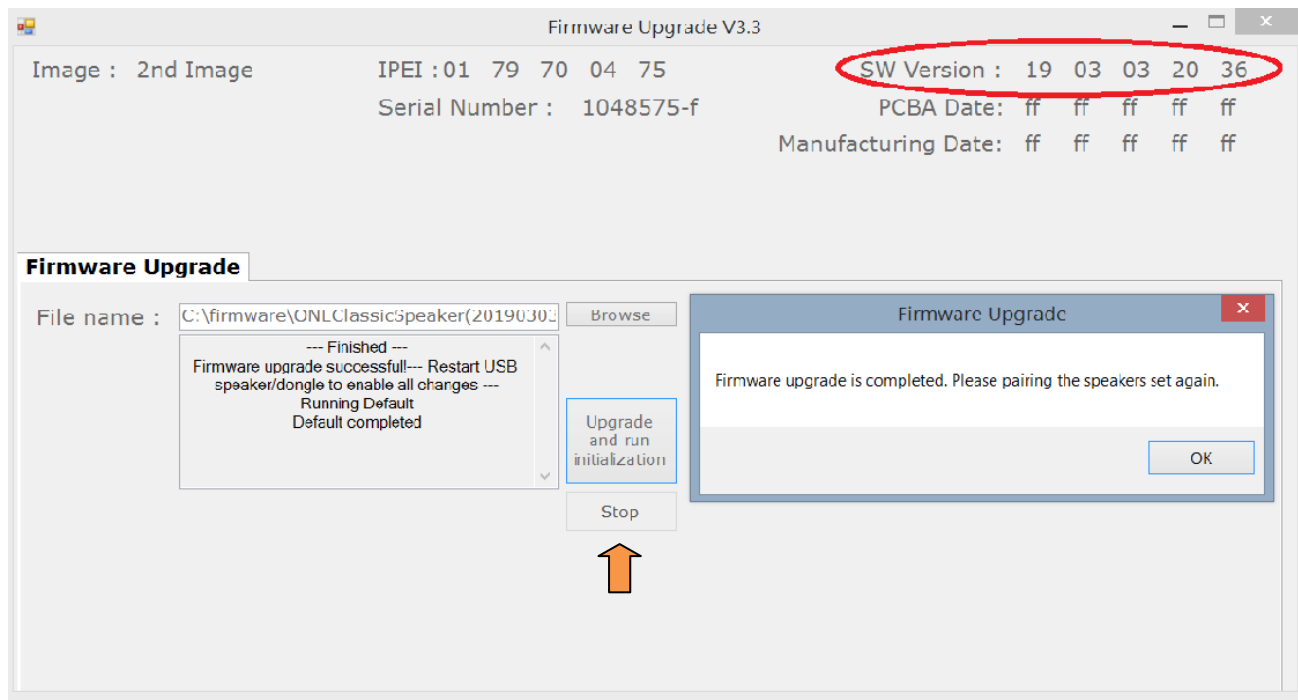
3. Select the firmware file (e.g. ONEClassicSpeaker(20180303).fwu for ONEClassic speaker)



4. Click [Upgrade and run initialization] to start firmware upgrade



5. Complete message would be pop-up after firmware upgrade is finished. You will see SW version is changed to date 190303 (time 20:36).



Remark : If you wait more than 2 minutes without your PC has progress, press [Stop] to terminal upgrade. Unplug the USB cable, wait 10 second, plug in the USB cable, then repeat step 2~5.

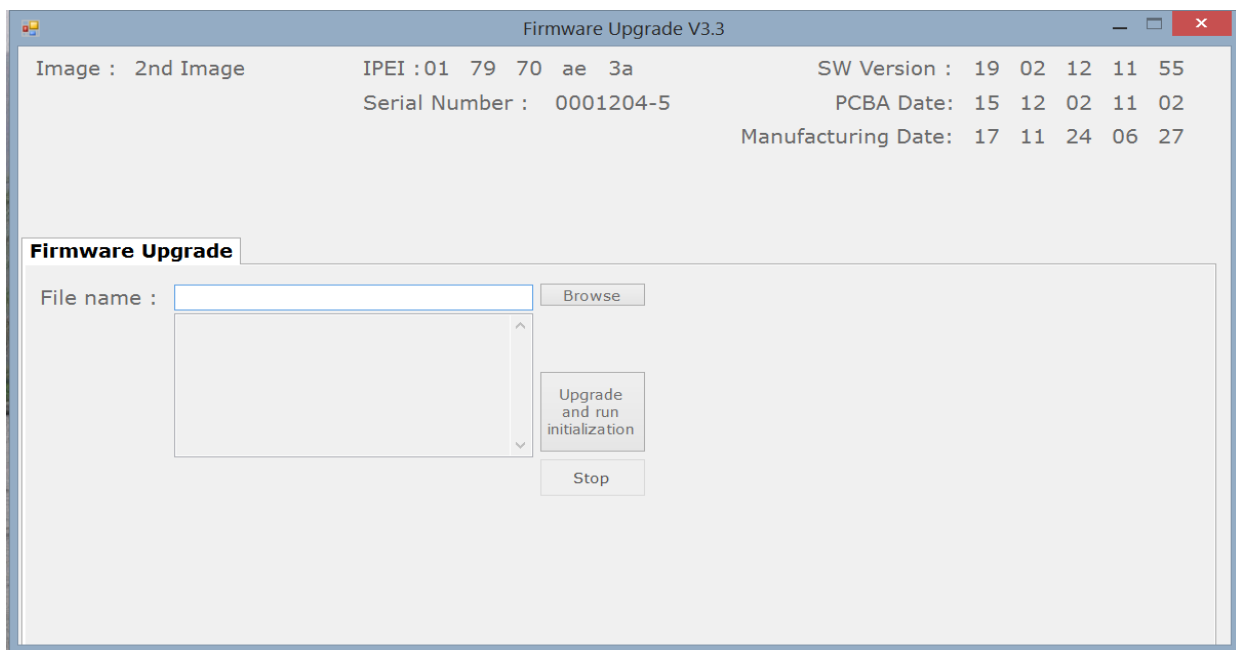
6. Do upgrade for another speaker. Unplug USB cable, wait for 10 second, plug USB cable to another speaker. Repeat step 4~5.

5 Upgrade firmware on ONEdongle

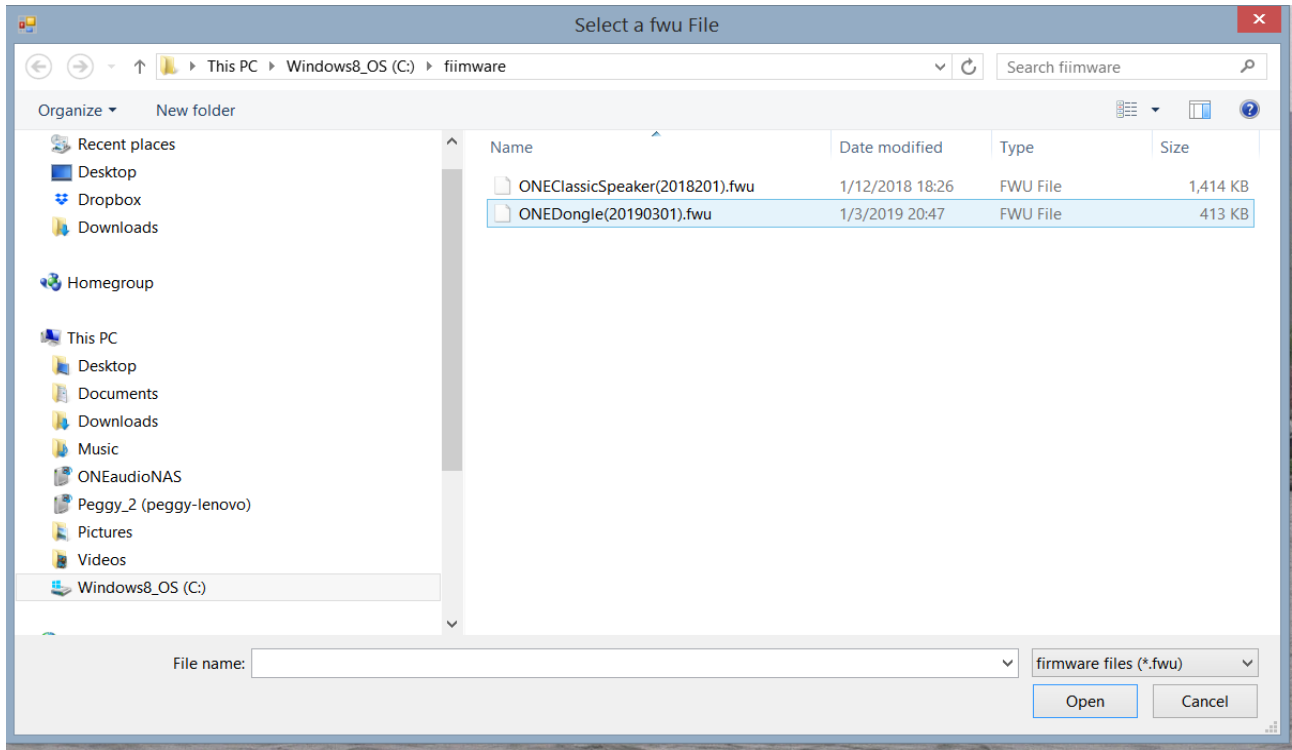
1. Insert your dongle to PC USB socket. If it is your first time usage, PC will install audio driver on the first time usage, please wait auto-installation of USB audio driver complete.



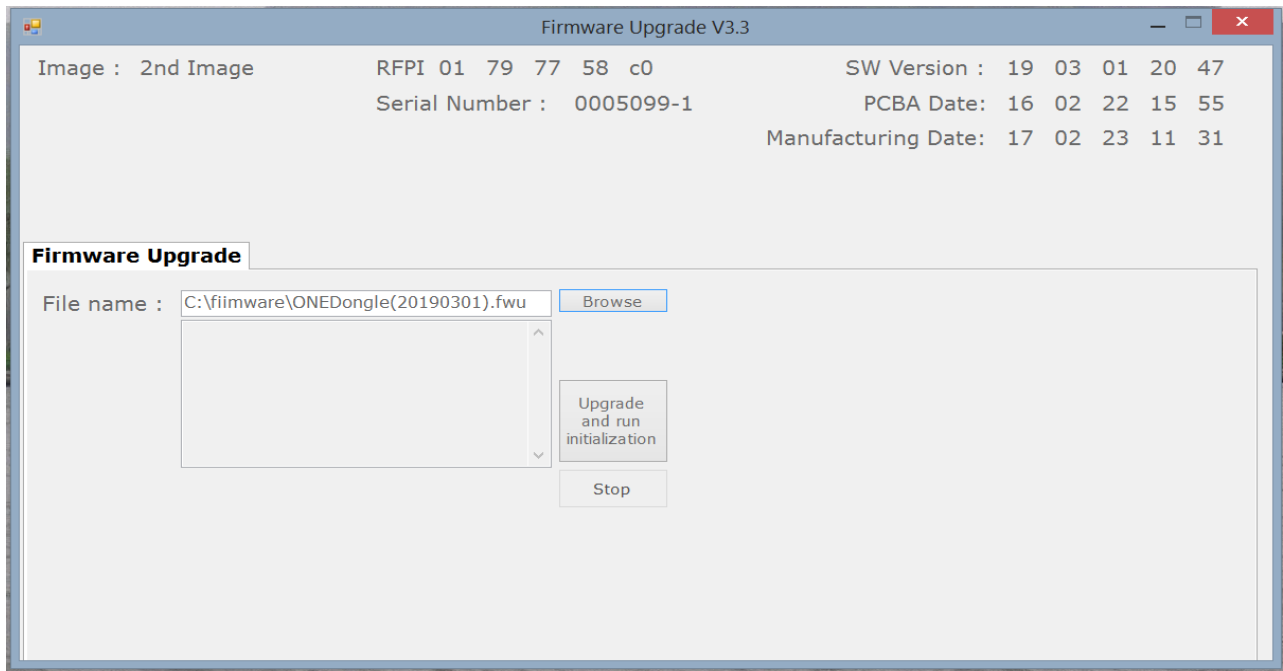
2. The screen will show information when the dongle is plug in USB port. Click Browse to select firmware.



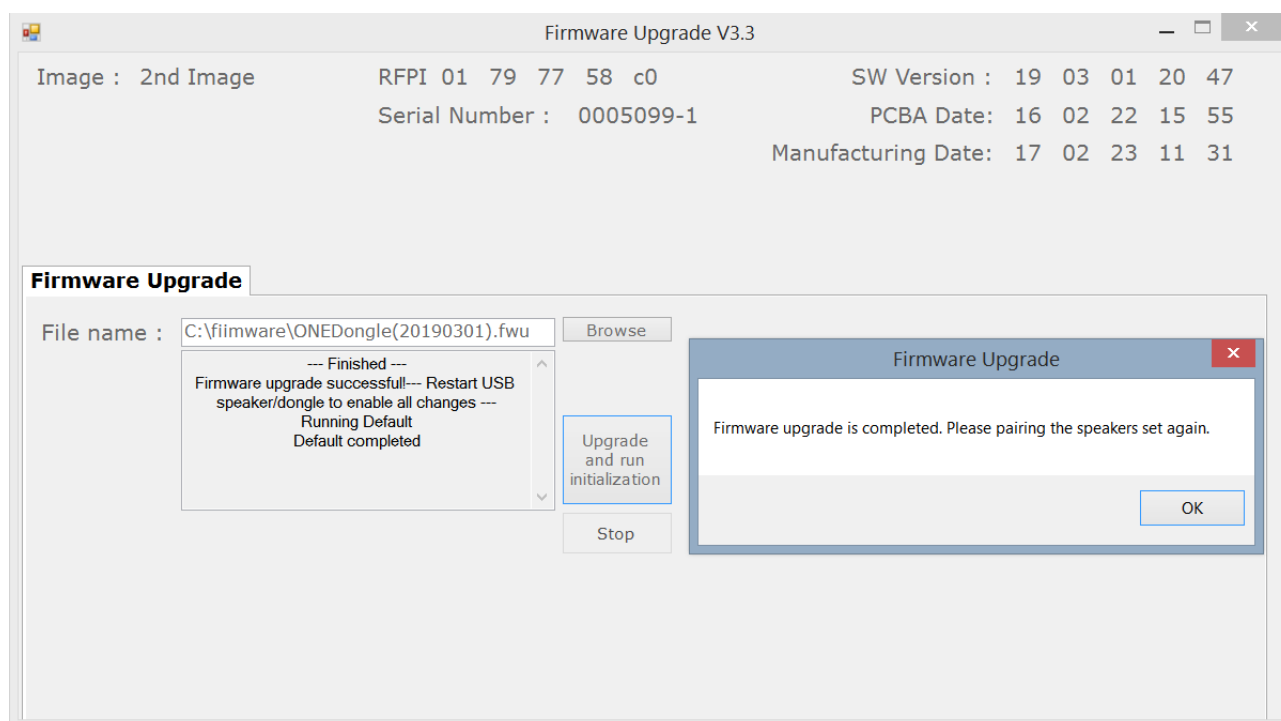
3. Select the firmware file



4. Click [Upgrade and run initialization] to start upgrade the firmware.



5. Complete message would be pop-up after the process finish. SW version date will be changed.



6. Remove the dongle from PC.
7. If it is shown fail screen or upgrade process is stop for a minute, press [Stop] to stop process. Repeat step 3~5.

6 Pairing the firmware refreshed speaker and dongle

ONEClassic speaker set

1. Power on ONEclassic speakers (power up the adaptor or long press [Power] key)
2. Speaker will auto enter pairing mode, you will hear "Pairing". Main speaker group is assigned by default. If you don't need to change speaker group, jump to step 5.
3. Long press [+] key to roll speaker group selections. For stereo kit the speaker group should be "I am the main speaker."
4. Press [-] key to confirm speaker group, pairing process is started, "Pairing" is heard, speaker green/orange LEDs will be toggled.
5. Repeat step 2~4 for another speaker.
6. Insert ONEdongle in an USB Power adaptor or an USB power bank. ONEdongle will go to pairing mode after 2 second with orange LED blinking.
(don't put ONEdongle to PC USB port, ONEdongle will enter audio mode connect to your PC and it can't do pairing with speaker)



7. Wait about 20~60 second. If pairing complete, speakers will report "Paired with stereo dongle". Then restart again and report "I am on the left/right".
8. Pairing is complete, remove ONEdongle and insert it to your PC. You will have new firmware on your speaker.

ONEaudio battery speaker set

1. Long press [+ / Power] key to power on the speaker. A power-up tone would be heard.
2. Speaker will auto enter pairing mode, you will hear "Pairing". Main speaker group is assigned by default. If you don't need to change speaker group, jump to step 5.
3. Long press [+] key to roll speaker group selections. For stereo kit the speaker group should be "I am the main speaker."
4. Press [-] key to confirm speaker group, pairing process is started, "Pairing" is heard, speaker red/blue LEDs will be toggled.
5. Repeat step 2~4 for another speaker.
6. Insert ONEdongle in an USB Power adaptor or an USB power bank. ONEdongle will go to pairing mode after 2 second with orange LED blinking.
(don't put ONEdongle to PC USB port, ONEdongle will enter audio mode connect to your PC and it can't do pairing with speaker)
7. Wait about 20~60 second. If pairing complete, speakers will report "Paired with stereo dongle". Then restart again and report "I am on the left/right".
8. Pairing is complete, remove ONEdongle and insert it to your PC. You will have new firmware on your speaker.

7 Troubleshooting on speaker firmware upgrade

If speaker having problem in firmware upgrade, speaker will be locked up or speaker don't have any response.

To release from locked state, remove ONEclassic power, or hold battery speaker [-] key for 10 second to assert a hard reset.

Then, you need to manually force your speaker to primary firmware for recovering.

7.1. ONEclassic, Q-Bass speaker

- a) Unplug USB cable on the speaker side
- b) Power off the power adaptor of speaker, wait for 1 minute for settling.
- c) Hold [Power] and [-] key, then power on the speaker
- d) Keep hold [Power] key and [-] key, LEDs will quickly flash for 3 seconds
- e) Once the LEDs turn to slow flash, release [-] key and keep holding [Power] key
- f) Wait about 10 second until LEDs go off, release [Power] key, the speaker is working primary firmware.
- g) Do firmware upgrade again, please follow step 4.1~4.5.

7.2. ONEaudio battery speaker

- a) Unplug USB cable on the speaker side
- b) Hold [-] key to power off the speaker and wait for few seconds for settle down, if the battery speaker is locked up, hold [-] key for 10 seconds to assert a hard reset.
- c) The battery speaker is at power off state. Press and hold [+Power] key and [-] key.
- d) Speaker would be power on and LEDs will quickly flash for 3 second.
- e) Once the LEDs turn to slow flash, keep hold on [+power] key and release [-] key. (Don't hold [-] key too long, it will generate a hard reset signal to speaker)
- f) Wait about 10 second until LEDs go off, release [Power] key, the speaker is working on primary firmware.
- g) Do firmware upgrade again, please follow step 4.1~4.5.